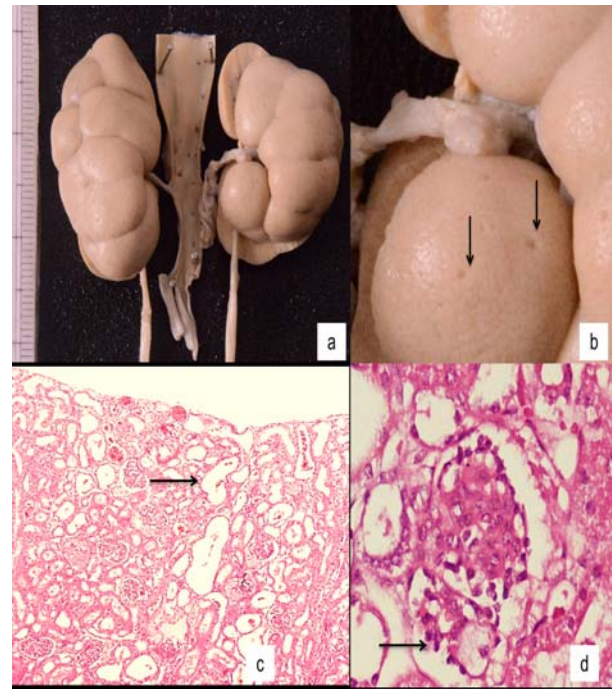


WEB FIG. 1 Liver: (a): Cut surface with fine reticular fibrosis; (b and c): Multiple vague nodules with diffuse periportal fibrosis (H&E, reticulin $\times 10X$); (d): CK 7 highlighting the interrupted ring arrangement of bile ducts (IHCx10X).



WEB FIG. 2 Kidneys: (a): Enlarged with persistent fetal lobulation; (b): Numerous pin head size cysts; (c): Cysts arranged perpendicular to cortex (H&Ex 10X); (d): Glomerular foam cell (H&Ex 40X).