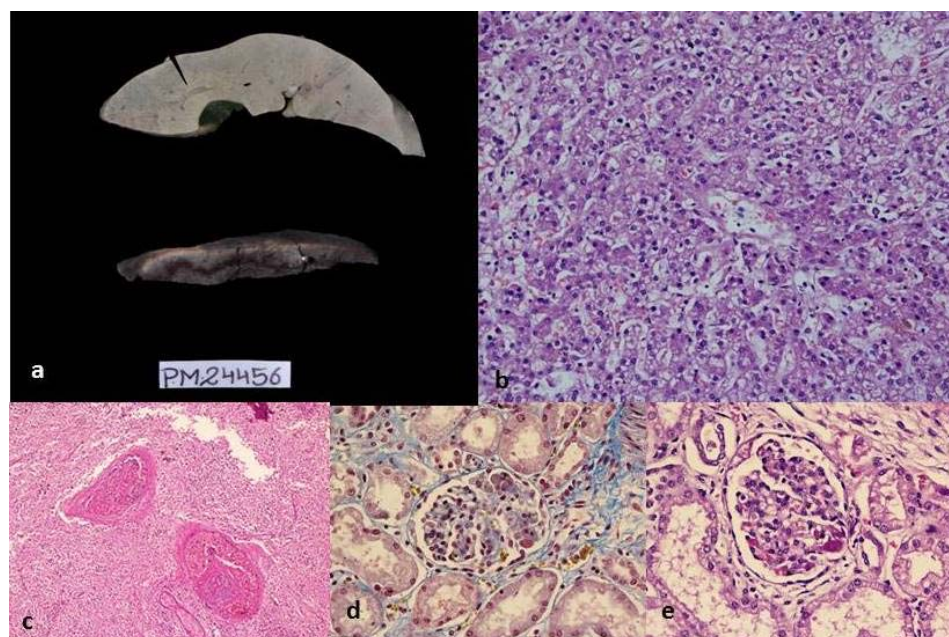


WEB FIG. 1 Histopathology of the lung: Gross photograph showing firm solid lungs and enlarged hilar lymph nodes (a); Microphotographs showing widened interstitial septae with type 2 pneumocyte proliferation [H&Ex 10X] (b and c); organization with masson's body formation and mild interstitial inflammation [H&Ex 20X] (d); organization interstitial fibrosis [Masson's trichrome x 10X] (e); diffuse alveolar hemorrhage [H&Ex 10X] (f); hemosiderin laden macrophages in alveolar spaces [Purpissan blue stain x 20X] (g); muscle hypertrophy of pulmonary artery [H&Ex 20X] (h); and fibrin thrombi within pulmonary artery [H&Ex 20X] (i).



WEB FIG. 2 Histopathology of other organs: Gross photograph of liver and spleen, spleen showing infarct as pale areas (a); Microphotographs of liver showing sinusoidal dilatation and congestion [H&Ex 20X] (b); of spleen showing thrombus in splenic artery branches [H&Ex 10X] (c); and of kidney showing fibrin thrombi within capillary loop highlighted as red in Martius Scarlet blue stain along with changes of acute tubular necrosis [H&Ex 20X] (d and e).